



THE LIMITLESS POSSIBILITIES OF EMBRACE END-TO-END ERP

Future proof your business with industry built ERP solutions that are flexible, agile and scalable to adapt to the growth and evolution of your business easily and cost-effectively.



Proven, Time-Tested ERP

Streamline and accelerate your processes across procurement, warehousing, production, service, sales and finance with Embrace ERP. Employ proven, time-tested, purpose built, end-to-end ERP business solutions for small, medium, and large enterprises.



Future Proof

Future proof your business with the only ERP software solution you will ever need again. Benefit from technologies such as IoT, 4IR, Cloud, Mobile, AI and BI. Responsive and at the forefront of innovation, Embrace delivers a solution and a team you can rely on today and tomorrow.



Industry Built

Run your business your way, on-premises, in the cloud or outsourced. Purpose-built, from the ground up, for your industry, Embrace can be tailored to an exact fit for your business operations and processes. Fully integrated, Embrace has been designed to support progress and growth.

More than technology, Embrace is a partner invested in your success - with a 100% implementation success rate, spanning 38 years. Join leading companies all over the world who are leveraging the capabilities, industry experience and ERP expertise of our team in successfully implementing Embrace.

Embrace the future, today! Take advantage of an innovative, fast, flexible, simple business solution that supports your current needs and will promote your competitive edge far into the future.



Business Benefits



Comprehensive and end-to-end, the solution addresses the needs of financial, distribution, service, rental and manufacturing enterprises with a fully integrated and flexible offering. Business-driven software design, leveraging the latest technologies ensures your competitive edge today and well into the future. Local support and expertise are right here, on your doorstep, supporting you as you drive your business forward.



Run more efficiently - Streamline and accelerate business processes, including procurement, inventory, sales and customer service. Build sustainable growth and improve operational efficiency and productivity. Deliver exceptional customer experiences, automate and integrate workflows, and empower employees to act based on real-time insights.



Embrace delivers end-to-end management and control of your business. Full integration eliminates information silos, giving everyone across the business access to the single source of truth to communicate insights quickly and turn insight into action in real time. With complete visibility throughout your business, Embrace ensures you remain innovative, flexible, efficient and profitable.



Make better decisions faster - Embrace facilitates the flow of real-time information across departments and business units to make data-driven business decisions and improve operational performance. Leverage executive dashboards, automated alerts and mobile tools to manage the way you want. Make strategic decisions, with visual formats, tailored to your needs. Monitor and measure your business performance and conduct what-if modelling with accurate, reliable, real-time data.



Extend your business solution with well-defined integration services and APIs that extend beyond the enterprise to incorporate new digital technologies and leverage the power of the internet. Connect your entire business ecosystem for specific transactional tasks that maximize efficiency and speed market success. Embrace APIs deliver limitless possibilities and a robust, adaptable technology platform to deliver on the business needs of today and the possibilities of tomorrow.

Our Approach

Selecting an ERP solution that best fits your unique business requirements includes evaluating the service requirements that go hand in hand with deploying an optimized solution. Embrace ticks all the boxes, going Beyond Solutions, offering a variety of services to assist you when necessary. Dedicated, experienced and expert teams assist with every phase of the project, from the ERP investigation and purchasing cycle, the development of the project plan, needs analysis, training and implementation, to ongoing system support and development.

We believe that service is the most powerful differentiating factor for businesses today and have aligned our team strategy to meet the demands and challenges in an ever-changing IT and ERP environment, ensuring that we deliver Service Beyond Excellence!

Embrace End-to-End ERP Solutions have been engineered and industry built to an exact fit for your business. Intuitive, easy to use and engaging, the integrated solutions will streamline and control every facet of your business while increasing operational efficiency and effectiveness.

Financial Management



Ensure one source of truth for finance and operational data. Streamline accounting and general ledger, comply with revenue recognition guidelines, automate expense processing, and report on existing and new KPIs. Gain the insight you need to refine your business model, respond to competitive opportunities and become an agile finance team.

Inventory Management



Increase operational efficiency, drive down supply costs, optimize stock levels and streamline stock movement. Deliver superior customer service by ensuring the right product is at the right place, at the right time and at the right price.

Supply Chain Management



Embrace enables the most agile, efficient, effective and lean distribution operations, improved customer service and increased profits by providing real-time visibility, comprehensive reporting, enhanced traceability, recall management and stock control, spanning the entire Supply Chain.

Sales and Distribution



Manage all elements of the sales cycle, from managing your customer and vendor details to identifying key sales trends. Improve sales with better selling experiences and accelerate the buying process.

Rental And Hire



Streamline and automate rental processes, ensure accuracy and serve customers with unmatched agility. Simplify operations, unique billing scenarios, contract management and asset lifecycle management.

Service and Workshops



Transform your service center from a cost center to a business driver. Management of costs is centralized and simplified, with all costs, including labor, parts, buyouts, outwork, warranties and other ancillary charges, controlled and tracked.

Why Embrace?

- Scale the solution to adapt to your current and future needs
- Use the same core software whether you expand from 10 to 1,000+ users
- Run your business your way - on premise, in the cloud or in a hybrid environment
- Adapts and molds to your business processes



Run your business your way with a business solution that is scalable, flexible and agile enough to evolve with you, adapt to your current and future needs and ensure your competitive edge

Manufacturing



Plan, execute and control production more effectively. Built specifically for today's make to order, engineer to order, configure to order, build to stock, and mixed mode manufacturers, Embrace enables you to control, integrate and synchronize every aspect of the manufacturing process.

Reporting and Analytics



From pixel perfect financial reporting to highly visual dashboards, Embrace delivers timely information to help you make critical business decisions to grow your business. Equip all departments with the visibility they need to make decisions for today and drive change for tomorrow.

System Management



Easy to use built in tools enables Embrace screens, reports, queries, and job streams to be easily tailored to your specific environment. Protect sensitive data and critical functions with centralized, multi-level security. Format stationary and seamlessly integrate applications for efficient data processing.

Industry Expertise



We understand your business and boast a 100% success rate for implementations across a wide range of industries, including automotive, parts, electronics, chemicals, paper, packaging, industrial machinery, and equipment.

Services and Support



Dedicated and experienced teams provide expert guidance through every phase of your project, from the investigation and purchasing cycle, the project plan, needs analysis, training, and implementation, to ongoing system support and development.

Connected Services



Extend your Embrace ERP business solution to integrate with the entire ecosystem within and beyond your enterprise. Whether you are integrating to intelligent devices, business partners or other systems,

Future-proof your business

- Embrace digital transformation quickly, affordably and with minimal disruption
- Leverage innovative technologies and functionality that helps your business move forward
- Improve collaboration and empower users with an intuitive, easy-to-use platform
- Run your business, your way





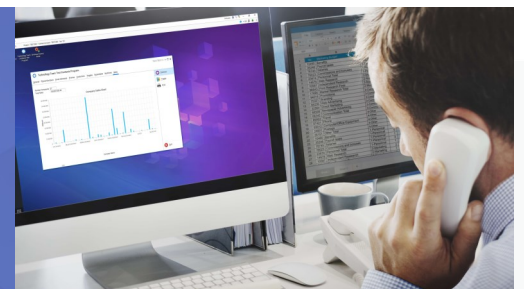
When you implement an Embrace ERP solution, you are investing in a long-term, win-win partnership, which will deliver significant value well into the future.

ACS-Embrace delivers unparalleled levels of customer service and ERP solution confidence, ensuring win-win relationships that last.

Gain the edge with industry-specific processes, built-in compliance, and best practices gained over 38 years of experience working with industry specialists, consultants, and market leaders across a broad range of leading companies.

Deployable on-premises, in the cloud, or in a hybrid environment, Embrace ERP is highly scalable and designed to drive instant value across all lines of business and industries. A 100% implementation success track record ensures complete peace of mind and quick time to value.

Part and parcel of selecting an ERP solution that best fits your unique business requirements is evaluating the service requirements that go hand in hand with deploying an optimized solution.



CUSTOMER SERVICE EXCELLENCE

'We, as with any business, need good support from our service providers; They are critical to our success; Embrace is our one service provider who excels in this area and that is a key differentiator'

Wayne Walton - Managing Director
DLM (Dupleix Liquid Meters)

Comprehensive Services Include

- ◆ Exploration, evaluation and selection
- ◆ Implementation and training
- ◆ Support Center and Help Desk
- ◆ Research and development
- ◆ Account Manager for life

Embrace ticks all the boxes, going Beyond Solutions, offering a variety of services to ensure your success.

We have dedicated, experienced and expert teams to assist with every phase of the project, from the ERP investigation and purchasing cycle, the development of the project plan, thorough needs analysis, training, and implementation, to ongoing system support.

Our comprehensive support infrastructure ensures that all the services required to keep your business system running smoothly, efficiently, and optimally are readily available. These include a dedicated technical account manager, help desk, remote and onsite support.

As your company evolves and grows your requirements might change, or you may require system enhancements for a compelling competitive edge. Our Professional Services Team will meet with you to further tailor the solution, ensuring that all your current and future business needs are met.

We believe that Service is the most powerful differentiating factor for businesses today and have aligned our team strategy to meet the demands and challenges in an ever-changing IT environment, ensuring that we deliver Service Beyond Excellence!

About ACS-Embrace

Embrace develops, implements, and supports innovative enterprise application software, leveraging new and emerging technologies.

Building on a track record of innovation and 100% implementation success, spanning 38 years, our Embrace ERP solution combines comprehensive cutting-edge functionality, simplicity of use, and unrivaled customer support.

Flexible, scalable and with a variety of deployment options, we help organizations of all sizes and industries combat complex business challenges, generate new opportunities for innovation and growth, and stay ahead of the competition.



Tel: 763-237-5128 | Info@NovoResults.com | NovoResults.com

16430 Birch Briar Trail, Minneapolis, MN 55447

