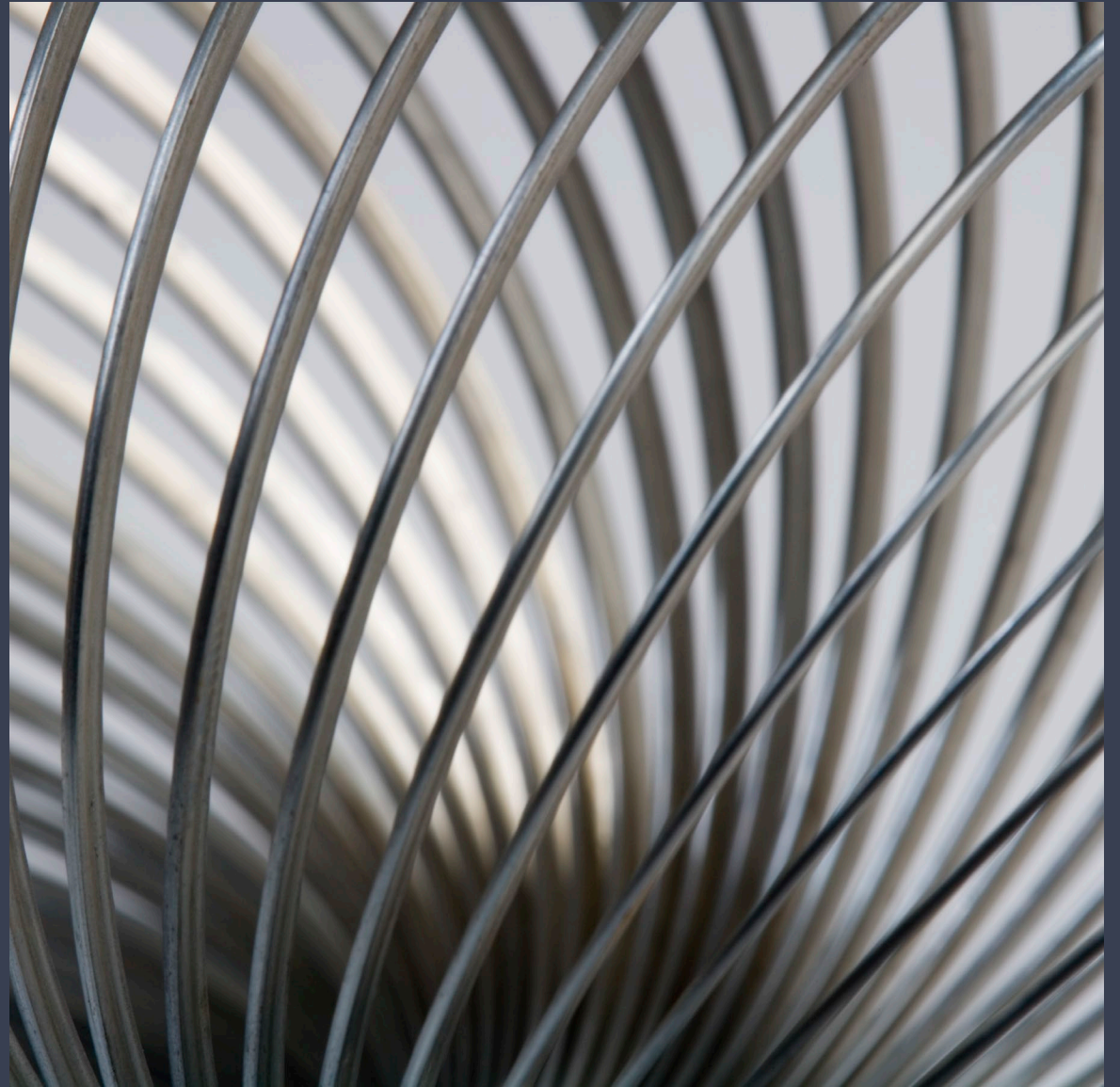


NUGM 2024

MASTER AGENT

Marc Harbeson, NovoROI Systems, LLC



AGENDA

Master Agent
Initial Setup

Tasks

Queues

Schedules

Examples

ECA Related
to Master
Agent

DJS
Replacement
Options



THINGS MASTER AGENT CAN DO

- Consolidate control of all other Manage 2000 service phantom processes
 - TRACK.USER.COUNTS, AGL.INTERFACE, BTI.PHANTOM(S), ECA.AGENT, MRP.BG.PROCESSOR, SCM.BG.PROCESSOR, SDI.BG.PROCESSOR, SOP.BG.PROCESSOR, PDF Processing Phantom
- Automatic start with first user login (Remember ECA at release 6.5?)
- Service multiple MAIN/TRAIN accounts with one service agent
- Script based on prompt names / IDs using a scripting language



THINGS MASTER AGENT CAN DO

- Run tasks based on ECA input
- Replace DJS operations as well
- Replace BATCH.MASTER completely
- Notify users when things complete, error, start, pause
- Impersonate end users (for spooler output, for example)



WHY MASTER AGENT VS BATCH MASTER?

- Task debugging is much better
 - No “Black Box” errors
 - You know specifically why a task fails and where
 - No guessing what answers go in which order, and what answer goes to which prompts
 - also handles multiple screen / multi value prompts directly
 - No digging through `_PH_` files to find out what happened
 - Proactive notifications
 - e.g., something completes/errors/etc.



MASTER AGENT ERROR EVENT EXAMPLE

```
PWS Viewer - [Task Log 1597157421_LAB_NIGHTLYGLPOST_T01_GL.POST Info (roi:NUGM.LAB)]
File Edit Window Help
10
K
-----
>>> Data CompanyNumber=01 Unique Id is GL.POST*110 (1 of 1)
-----

Y7
K
Y7
K
Y# .01) 01 ROI Systems, Inc.
Y(- 1
Y4- 0
Y6
K
*** STOP in GEN.MA.SYS.ERRORS from 9996 SCREEN.MSG ***

MA ERROR 9996 - GET.MA.TASK.DATA Aborted - Prompt Data "CompanyNumber" scripted 1 times w
request pending. Is this incomplete multi-value prompt? Is this a valid answer?, TA_Agent007
_LAB_NightlyGlPost_T01_GL.POST Aborted!!!

--- Execution Stack ---
[1] /usr/ud81/sys/CTLG/OBJ.8.1/32/MT372: 382
[2] /usr/ud81/sys/CTLG/OBJ.8.1/54/EXECUTE.FUNCTION: 67
[3] /usr/ud81/sys/CTLG/OBJ.8.1/60/ExecuteFunctionByFunctionType: 204
[4] /usr/ud81/sys/CTLG/OBJ.8.1/9/MT420: 14
[5] /usr/ud81/sys/CTLG/OBJ.8.1/54/SUB.MT420: 809
[6] /usr/ud81/sys/CTLG/OBJ.8.1/63/SUB.MT500: 1541
[7] /usr/ud81/sys/CTLG/OBJ.8.1/67/SCREEN.IP: 472
[8] /usr/ud81/sys/CTLG/OBJ.8.1/15/GET.MA.TASK.DATA: 54
```



MASTER AGENT INITIAL SETUP

- MA.CONSTANTS
 - Define what accounts the agent(s) will cover
 - Define how many concurrent tasks may be running in each account
 - Define who can “admin” the agent interface
 - Define fonts / colors



MASTER AGENT SAMPLE CONSTANTS

m2k73sp3 - roi:NUGM.DEMO - PWS/Win

File Edit Commands Favorites Objects Help ProcessOpts

MA.CONSTANTS - Master Agent Constants "ADD" Mode

*** Accounts 1 ***


	01 Name	02 Real Name	03 Startup Queue	04 Tasks	04 Calendar
.01)	NUGM	NUGM.DEMO		2	
.02)					

----- System Users -----

*** Master Agents 1 ***

	06 Name	07 Accounts	08 Auto	09 Login	10 Error	11 Tasks	11 Calendar
.01)	Agent007	NUGM	No	ROI	MAH	1	
.02)							

Read Me



13 Req Polling 10

14 Mix Polling 30

15 Sch Polling 60

16 Admin Users MAH

17 Error Subr

18 Options 45 ?

01) QueueScriptFormat=2 Dot

02) DefaultTaskOnError=Suspend

03) DefaultTaskMaxSeconds=3600

19 Colors 30

01) tomato

02) red

Show

Change Which Field, END, TOP, \P |.....

User roi:NUGM.DEMO PID 0010 On M2K73SP3



DEFINE A TASK

- A task is “something to do”
- The task also defines the inputs (Prompts)
- Note: If you use SCREEN.BUILD and add prompts or cause the unique prompt IDs to change, you may need to revisit this step
- A task can be a Function (Screen and Prompts) or directly execute a program



EXAMPLE TASK: MRP.CALC

m2k73sp3 - mah:NUGM.DEMO - PWS/Win

File Edit Commands Favorites Objects Help ProcessOpts

MA.TASKS Master Agent Tasks "CHG" Mode

Task MRP.CALC Account

03 Desc Execute MRP.CALC Process

04 Show MRP.CALC 05 Exec Type Function 06 Exec Name MRP.CALC

07 Prompt Tag	6	08 Prompt Text
.01)	DivisionCode	Enter next Division Code, ALL for all codes, or END
.02)	FacilityCode	Enter Facility Code, ALL for all Codes, TOP
.03)	RegenRun	Regeneration Run
.04)	PrintedReport	Do You Wish to have a Printed Report (Y, N or END)
.05)	DJSPrompt	Do you wish to run
.06)	CWF	Change Which Field, END, TOP, \P
.07)		
.08)		
.09)		
.10)		

Load Prompts Task Info

Change Which Field, END, TOP, \P |.....

User mah:NUGM.DEMO PID 0070 On M2K73SP3



DEFINE A SCHEDULE

- SESC.MAINT is used to maintain the schedules
- The schedule can be simple or complex
 - Exclude days?
 - Exclude future dates?
 - Run multiple times per day?
 - Run effective or ineffective dates?
- Schedules can be re-used in multiple queues



SAMPLE SCHEDULE FOR MRP

Run M-F at 1 AM

m2k73sp3 - mah:NUGM.DEMO - PWS/Win

File Edit Commands Favorites Objects Help ProcessOpts

SESC.MAINT - Daily Schedule "ADD" Mode

01 Event Schedule Code 02 Type

03 Description Clear Schedule

Intervals

Day	Day of Week	06 Exclude	07 Start Time	08 End Time	09 Between Events	10 Type
0	Sunday	Y				
1	Monday	N	01:00:00			
2	Tuesday	N	01:00:00			
3	Wednesday	N	01:00:00			
4	Thursday	N	01:00:00			
5	Friday	N	01:00:00			
6	Saturday	Y				

Exceptions to Daily Schedule

	11 From Date	12 To Date	13 Exclude	14 Start Time	15 End Time	16 Number Intervals	17 Type
.01)							
.02)							
.03)							

Entries 0

Change Which Field, END, TOP, \P |.....

User mah:NUGM.DEMO PID 0070 On M2K73SP3

NEXT, THE QUEUE TO TIE IT ALL TOGETHER...

The screenshot shows a software window titled "m2k73sp3 - mah:NUGM.DEMO - PWS/Win". The menu bar includes "File", "Edit", "Commands", "Favorites", "Objects", "Help", and "ProcessOpts". The main area is titled "MA.QUEUES Master Agent Queues" and is in "CHG" Mode. It displays configuration for a queue named "NIGHTLYMRP" under account "NUGM".

Queue	Account	Queue Type
05 Desc	NIGHTLYMRP	N
06 Show	NIGHTLYMRP	N
		04 AdHoc Dflt
		07 Active
		08 Priority
		09 History

Additional settings on the right:

04	AdHoc Dflt	N
07	Active	Y
08	Priority	50
09	History	14

The "Command Script" section (10) contains the following lines:

```
.01) Queue  
.02) ..OnLoad  
.03) ...EventSchedule MRP ready  
.04) Task MRP.CALC ROI  
.05) ..OnPrompt  
.06) ...Data DivisionCode=ALL  
.07) ...Data FacilityCode=ALL  
.08) ...Data CWF=END  
.09)  
.10)
```

Buttons at the bottom include "Show Tasks", "Load OnPrompt", and "Check Syntax". A status bar at the bottom shows "User mah:NUGM.DEMO PID 0070 On M2K73SP3".



ACCEPTING INPUT FROM ECA

- We can pass variables into Master Agent using {} as wrappers
- We can specify what user ID to execute the job as well
 - This is handy if you are sending info into SPE spooler
- Make note that normal ECA rules apply – as in NagBuffer, function exclusion, etc.



SAMPLE ECA QUEUE

Note: ECA queue is a different "type" of queue

m2k73sp3 - mah:NUGM.DEMO - PWS/Win

File Edit Commands Favorites Objects Help ProcessOpts

MA.QUEUES Master Agent Queues "CHG" Mode

Queue	Account	Queue Type
TEST.QUEUE	NUGM	04 AdHoc Dflt
05 Desc	Test ECA Queue for OPEN.SO.CUST	07 Active
06 Show	TEST.QUEUE	08 Priority
		09 History

10 Command Script 16

.01) Queue

.02) ..OnLoad

.03) ...EventSchedule ECA.EVENTS READY

.04) ...MaxJobs 9999 LOAD

.05) Task OPEN.SO.CUST {RUN.USER}

.06) ..OnPrompt

.07) ...FormQueue STANDARD OPTION=HS COPIES=1

.08) ...Data PrintedReport=Y

.09) ...Data DropShipOrdersOnly=N

.10) ...Data SortOrder=1

Show Tasks Load OnPrompt Check Syntax

Change Which Field, END, TOP, \P |.....

User mah:NUGM.DEMO PID 0070 On M2K73SP3

ECA QUEUE ELEMENTS

- Task OPEN.SO.CUST {RUN.USER}
 - This allows us to pass in the user ID as a variable
-FormQueue STANDARD Option=HS Copies=1
 - This allows us to specify where printed information goes
 - This is but one example – see prompt help
-Data CustomerNumber={CM.ID}
 - This is the customer variable we are passing in
-Data CustomerNumber=;
 - Note how multi valued prompts must be handled



SAMPLE SCRIPT – FULL COPY

```
Queue
..OnLoad
....EventSchedule ECA.EVENTS READY
....MaxJobs 9999 LOAD
Task OPEN.SO.CUST {RUN.USER}
..OnPrompt
....FormQueue STANDARD OPTION=HS COPIES=1
....Data PrintedReport=Y
....Data DropShipOrdersOnly=N
....Data SortOrder=1
....Data CustomerNumber={CM.ID}
....Data CustomerNumber=;
....Data FacilityCode=ALL
....Data CWF=END
..OnCompleted
....Email MAH TEXT=TASK.COMPLETE
```



THE SCHEDULE FOR ECA QUEUE

Note: We are running daily, every 1 minute between 6 AM and 6 PM

01 Event Schedule Code: ECA.EVENTS

02 Type: R Recurring

03 Description: ECA Event Load Schedule

04 Nbr of Intervals Between Recurrences: 1

05 Schedule Interval Type: D

06 Start Time: 06:00:00

07 Stop Time: 18:00:00

08 Interval Between Triggers: 1

09 Interval Type: M

Day	Day of Week	12	Exclude
0	Sunday	N	
1	Monday	N	
2	Tuesday	N	
3	Wednesday	N	
4	Thursday	N	
5	Friday	N	
6	Saturday	N	

13	From Date	14	To Date	15	Exclude
.01)					
.02)					
.03)					
.04)					
.05)					

16 Reschedule Flag:

Change Which Field, END, TOP, \P |

User mah:NUGM.DEMO PID 0080 On M2K73SP3

THE ACTUAL ECA

The screenshot displays the 'm2k73sp3' application window with the following components:

- Menu Bar:** File, Edit, Commands, Favorites, Objects, Help, MSO, ProcessOpts.
- Title Bar:** m2k73sp3 - mah:NUGM.DEMO - PWS/Win
- Message Parameters:** ECA.BUILD - (S2) Keyword/Message Parameters, "CHG" Mode, CM.READ.1040, Customer 1040 was read.
- Table:** A table with columns 03-09 and rows .01-.05.
- Form Fields:** 10 From: @SYSUSER, 11 Subj: (empty), 12 Body: 7, 13 Web Language: HTML.
- Code Snippets:** .01) MF.CND RIGHTCM, .02) /CALL WRITE.ECA.MA.REQUEST, .03) Queue=TEST.QUEUE, .04) {CM.ID}=&CM.ID&, .05) {RUN.USER}=@SYSUSER.
- Command Line:** 14 ECL, 15 Uniquery ECL Command, 0.
- Footer:** Change Which Field | and User mah:NUGM.DEMO PID 0070 On M2K73SP3.

	03	Text	04	05	06	07	08	09
	Keyword	1	File	Field/Value/Compute	Conv	Frmt	File	Field
.01)	CM.ID		NEW/CM	Cust_Nbr				
.02)								
.03)								
.04)								
.05)								

FULL TEXT OF ECA BODY

Note the Master Agent Variables {RUN.USER} and {CM.ID} that get Passed into the Queue Script:

```
/IF.CND RIGHTCM  
/CALL WRITE.ECA.MA.REQUEST  
Queue=TEST.QUEUE  
{CM.ID}=&CM.ID&  
{RUN.USER}=@SYSUSER  
/END.CALL  
/END.CND
```



SOME REAL WORLD EXAMPLES TO THINK ABOUT

- When RQN is approved, Convert it to PO
- When PO is created, print it
- Run SHIPLISTS every 2 hours
- Run UPDATE.SYSTEM nightly
- Run EDI process on schedule
- Run COST.ROLLUP after new item creation process
- Run GL.POST / CLOSE.PERIOD / REOPEN PERIOD on a schedule



RUN GL POST AFTER MIDNIGHT EXAMPLE

```
1 PROGRAM SCHEDULE.GL.POST.VIA.ECA
2 *
3 * Directly tell master agent what period to use via ECA execution
4   Version="~Ver=~8.0.96~35634639~"
5 *
6 *
7 *** COPY COPY.TOOLS.BP STANDARD.COMMON ;*** Copied Source Follows (09-19-17)
8 $INCLUDE STANDARD.COMMON.VARIABLES FROM COPY.TOOLS.BP
9 $INCLUDE STANDARD.COMMON.APP.PROGRAMS FROM COPY.TOOLS.BP
10 ***
11 $INCLUDE COM.ECA FROM COPY.TOOLS.BP
12 *
13 FIND.DATE = DATE()-1
14 PRINT "Executing for Date: " : OCONV(FIND.DATE,"D2-")
15 CN = XLATE("SYS.CTL","COMPANY.NAME",4,"X")
16 GL.REC = XLATE("GL-COMPANY",CN,-1,"X")
17 IDX = ''; FP = ''
18 LOCATE FIND.DATE IN GL.REC<7,1> BY 'AR' SETTING IDX ELSE NULL
19 IF IDX # '' THEN
20     FP = GL.REC<5,IDX>
21 END
22 IF FP = "" THEN STOP "No fiscal period found!"
23 YEAR = FP[1,4]
24 MONTH = FP[5,3]
25 PERIOD.ANSWER = YEAR : "-" : MONTH
26 PRINT "Using Period: " : PERIOD.ANSWER
27 PROPS = ""
28 PROPS<-1> = "QUEUE=GL.POST.ECA"
29 PROPS<-1> = "{PERIOD}=" : PERIOD.ANSWER
30 ECA.INFO = ""
31 Results = ""
32 CALL WRITE.ECA.MA.REQUEST(PROPS, ECA.INFO, Results)
33 PRINT "GL Post ECA Request Submit Complete"
```



OPEN / CLOSE GL PERIODS?

MA.TASKS Master Agent Tasks *CHG* Mode

Task	REOPEN.PERIOD	Account	
03 Desc	Reopen Period		
04 Show	REOPEN.PERIOD	05 Exec Type	Function
		06 Exec Name	REOPEN.PERIOD

07 Prompt Tag	6	08 Prompt Text
01)	CompanyNumber	Enter the Company Number, END:
02)	FiscalPeriod	Enter the Fiscal Period (YY-PP), TOP:
03)	Logins	Enter the Login Accounts, ALL, TOP:
04)	Printed_Report	Do You Wish to have a Printed Report (Y, N or END)
05)	DJS	Do you wish to run
06)	CWF	Change Which Field, END, TOP, IP
07)		
08)		
09)		
10)		

MA.TASKS Master Agent Tasks *CHG* Mode

Task	CLOSE.PERIOD	Account	
03 Desc	Run CLOSE.PERIOD		
04 Show	CLOSE.PERIOD	05 Exec Type	Function
		06 Exec Name	CLOSE.PERIOD

07 Prompt Tag	7	08 Prompt Text
.01)	CompanyNumber	Enter the Company Number, END:
.02)	Period	Enter the Fiscal Period (YY-PP), TOP:
.03)	Logins	Enter the Login Accounts, ALL, TOP:
.04)	ClosePrior	Do you want to close prior periods?
.05)	Printed_Report	Do You Wish to have a Printed Report (Y, N or END)
.06)	CWF	Change Which Field, END, TOP, IP
.07)	DJS	Do you wish to run
.08)		
.09)		
.10)		



OPEN / CLOSE GL PERIODS?

```
Queue
..OnLoad
...EventSchedule GL.SCHEDULE READY
Task CLOSE.PERIOD MARCH
..OnPrompt
...Data CompanyNumber=02
...Data Period=@FISCAL.PERIOD-1
...Data Logins=ALL
...Data ClosePrior=N
...Data Printed_Report=N
...Data CWF=END
..OnCompleted
...Email MARCH
Task REOPEN.PERIOD MARCH
..OnPrompt
...Data CompanyNumber=02
...Data FiscalPeriod=@FISCAL.PERIOD-1
...Data Logins=ORG
...Data Logins=SANDRAL
...Data Logins=LASHAWNW
...Data Logins=MICHELLEW
...Data Logins=LINDAI
...Data Logins=MARCH
...Data Logins=HILARYP
...Data Logins=MELISSAS
...Data Logins=;
...Data CWF=END
..OnCompleted
...Email MARCH
Task AUTO.LOC.ADJUST MARCH
..OnPrompt
...Data RunType=M
...Data CWF=END
```

```
1 PROGRAM BUILD.GL.SESC
2 *
3 * Build the gl period end schedule for master agent GL schedule
4   Version="~Ver=~8.0.2~23272489~"
5 *
6 *
7 * GL.SCHEDULE needs period end dates added to it.
8 *
9 OPEN '', 'SESC' TO SESC ELSE STOP 'unable to open SESC file'
10 READ SCHED.REC FROM SESC, "GL.SCHEDULE" ELSE STOP "unable to read GL.SCHEDULE SESC record"
11 *
12 GL.CO = XLATE("GL-COMPANY", "02", -1, "X")
13 PER.END.DATES = GL.CO<7>
14 PER.TYPES = GL.CO<42>
15 *
16 SCHED.REC<37> = ''
17
18 FOR X = 1 TO DCOUNT(PER.END.DATES, @VM)
19   THIS.DATE = PER.END.DATES<1,X>
20   PER.TYPE = PER.TYPES<1,X>
21   IF PER.TYPE # "A" THEN CONTINUE
22   EXE.DATE = THIS.DATE+1
23   IF EXE.DATE < DATE() THEN CONTINUE
24   CURRENT.DATES = SCHED.REC<37>
25   LOCATE EXE.DATE IN SCHED.REC<37,1> SETTING DATE.IDX ELSE DATE.IDX = 0
26   IF DATE.IDX = 0 THEN SCHED.REC<37,-1> = EXE.DATE
27 NEXT X
28 WRITE SCHED.REC ON SESC, "GL.SCHEDULE"
```



SERVICE PHANTOM QUEUE EXAMPLE

```
Service ECA.AGENT ECA.AGENT AUTO
Service TRACK.USER.COUNTS BMASTER AUTO
Service BTI.PHANTOM-P01 BTIPHANTOM AUTO
Service BTI.PHANTOM-P02 BTIPHANTOM AUTO
Service BTI.PHANTOM-P03 BTIPHANTOM AUTO
Service BTI.PHANTOM-P07 BTIPHANTOM AUTO
Service BTI.PHANTOM-P09 BTIPHANTOM AUTO
```



DIRECT PROGRAM EXAMPLE

10.28.10.13 - mharbeson:QA.MAIN - PWS/Win

File Edit Commands Favorites Objects Help ProcessOpts

MA.TASKS Master Agent Tasks "CHG" Mode

Task: EDI.UTIL Account: []

03 Desc: EDI Utilities

04 Show: EDI.UTIL

05 Exec Type: Program

06 Exec Name: EDI.UTIL

	07 Prompt Tag	4	08 Prompt Text
.01)	CommandToPerform		Command to perform
.02)	ARG1		ARG1
.03)	ARG2		ARG2
.04)	ARG3		ARG3
.05)			
.06)			
.07)			
.08)			
.09)			
.10)			

Load Prompts Task Info

Change which Field, END, TOP, \P

Mail: 4

User mharbeson:QA.MAIN PID 0040 On RAMPAGE



DIRECT TASK PROGRAM EXAMPLE

```
PROGRAM EDI.UTIL
*
*
  Version="~Ver=~7.3.29~1450622243~"
*
*** COPY COPY.TOOLS.BP STANDARD.COMMON ;*** Copied Source Follows (12-07-
11)
$INCLUDE STANDARD.COMMON.VARIABLES FROM COPY.TOOLS.BP
$INCLUDE STANDARD.COMMON.APP.PROGRAMS FROM COPY.TOOLS.BP
***
$INCLUDE COM.ECA FROM COPY.TOOLS.BP
*
* General purpose EDI Utilities
*
INPUT ARG1
INPUT ARG2
INPUT ARG3
INPUT COMMAND.TO.PERFORM
PRINT "EDI.UTIL is performing command " : COMMAND.TO.PERFORM
```



SUB TO ELIMINATE DUPLICATE LIVE REQUESTS

```
SUBROUTINE CUSTOM.WRITE.MA.REQUEST(Properties,EcaInfo,Results)
*
* Write MA request only if duplicate request is not already Ready To Execute
  Version="~Ver=~8.0.5~63561201~"
* or Running
*
*
CURRENT.ACCOUNT = @PATH[4]
IF CURRENT.ACCOUNT # "MAIN" THEN RETURN
OPEN.ERR = 0
WRITE.JOB = 1
OPEN '', 'MA_JOB_CTL' TO MJC ELSE OPEN.ERR = 1
IF OPEN.ERR = 0 THEN
  * Get Queue from First Line
  QUEUE.NAME = FIELD(Properties<1,1>,"=",2)
  QUEUE.REC = XLATE("MA_QUEUE",QUEUE.NAME,-1,"X")
  IF QUEUE.REC # "" THEN
    IF QUEUE.REC<8> = "MAIN" AND CURRENT.ACCOUNT # "MAIN" THEN RETURN
  END
  tmpVar=''
  tmpAns=''
  FOR X = 2 TO DCOUNT(Properties,@AM)
    tmpVar<1,X-1>=FIELD(Properties<X>,'=',1)
    tmpAns<1,X-1>=FIELD(Properties<X>,'=',2,999999)
  NEXT
  TCL = "SELECT MA_JOB_CTL WITH Ma_Queue = " : DQUOTE(QUEUE.NAME)
  TCL := " AND Job_Status = " : DQUOTE("R") : " TO 9"
  PERFORM TCL CAPTURING JUNK
  READLIST JOB.IDS FROM 9 ELSE JOB.IDS = ''
  *
  FOR ZZ = 1 TO DCOUNT(JOB.IDS,@AM)
    JOB.ID = JOB.IDS<ZZ>
    READ JOB.REC FROM MJC, JOB.ID ELSE CONTINUE
    IF JOB.REC<10> = tmpVar AND JOB.REC<11> = tmpAns THEN WRITE.JOB = 0 ;* Duplicate
    Request Exists
  NEXT ZZ
END
IF WRITE.JOB THEN
  CALL WRITE.ECA.MA.REQUEST(Properties, EcaInfo, Results)
END
RETURN
```



EXAMPLE USING MA SCREEN IP INTERFACE

```
MA_Interface = 1
MA_ErrorInfo = ""
MA_PromptKey = ""
MA_PromptValue = ""
MA_PromptKey<-1> = "CTO.ENTRY.1*110"
MA_PromptValue<-1> = IM.KEY : @VM : "END"
MA_PromptKey<-1> = "CTO.ENTRY.3*131"
MA_PromptValue<-1> = "Y"
MA_PromptKey<-1> = MODEL.PROMPT.END
MA_PromptValue<-1> = "END"
MA_PromptKey<-1> = "SCROLL.INQ*7*"
MA_PromptValue<-1> = "END"
MA_PromptKey<-1> = "SCROLL.INQ*7"
MA_PromptValue<-1> = "END"

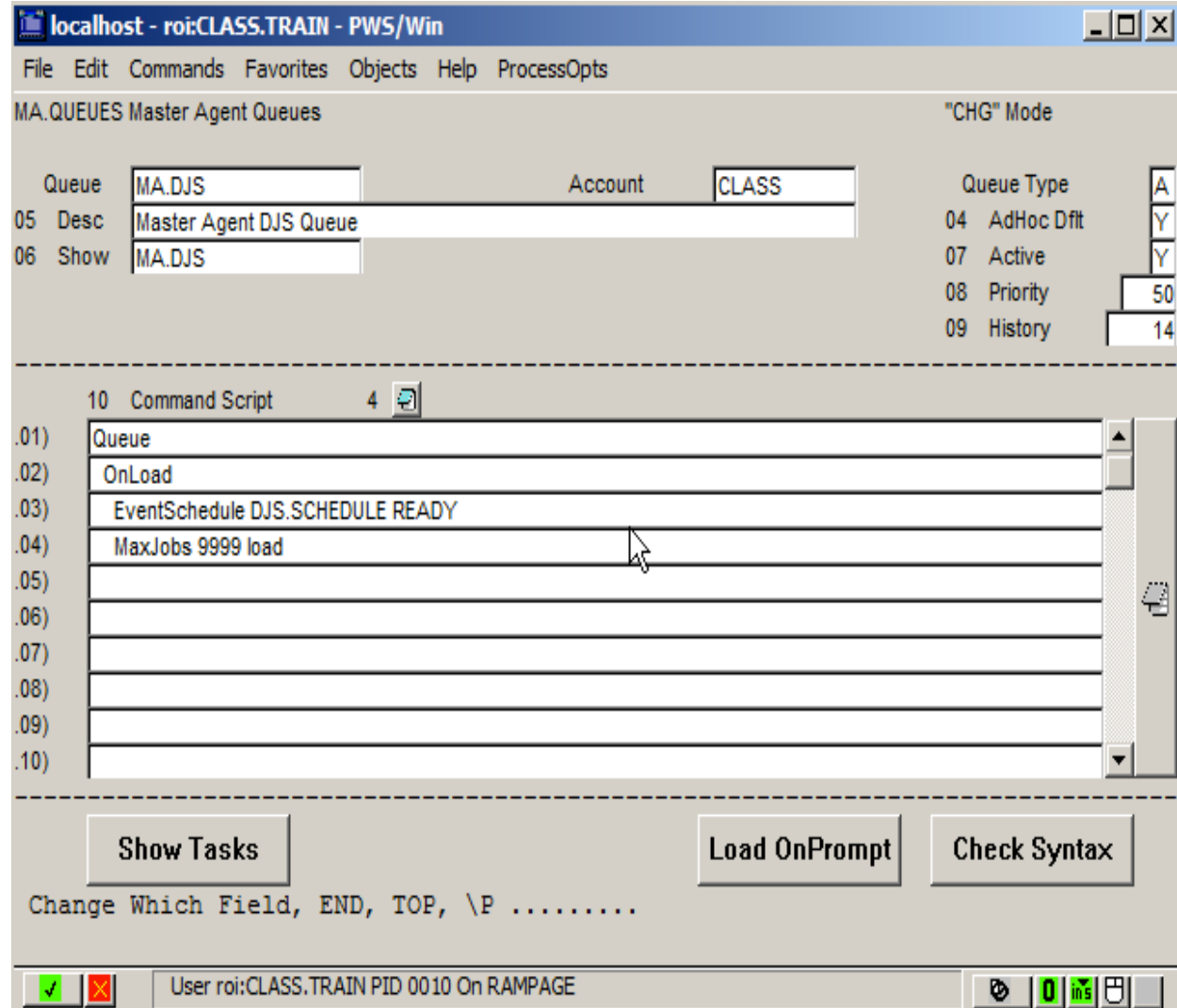
PERFORM "CTO.ENTRY"
MA_Interface = 0

CFG.RESULT = MA_ErrorInfo<15>
```



MASTER AGENT – DJS REPLACEMENT - QUEUE

- For DJS – the queue type is A
- Does not require a task
- DJS will provide the function and inputs and user



FUNCTION CHANGE TO SUPPORT DJS

- We must modify the function record
- Prompt 6 must be changed to support allowing DJS
- Prompt 7 determines the DJS type
- Prompt 14 determines which Master Agent Queue will process the request

localhost - roi:CLASS.TRAIN - PWS/Win

File Edit Commands Favorites Objects Help ProcessOpts

FN.BUILD - Batch Processing Parameters "CHG" Mode

Function Name LIST.VEN

Type F Function

Module PUR Purchasing

Description Print Vendor Master in Name or Nbr Seq

05 ROI Recommends DJS 0

06 Batch Type S

07 Batch Processor MA

DJS Options

08 Job Priority

09 Use Auto Defaults

10 Default DJS Queue

11 Default Form Name

12 Earliest Start Time

13 Latest Start Time

MA Options

14 MA Queue

.01 MA.DJS CLASS

.02

.03

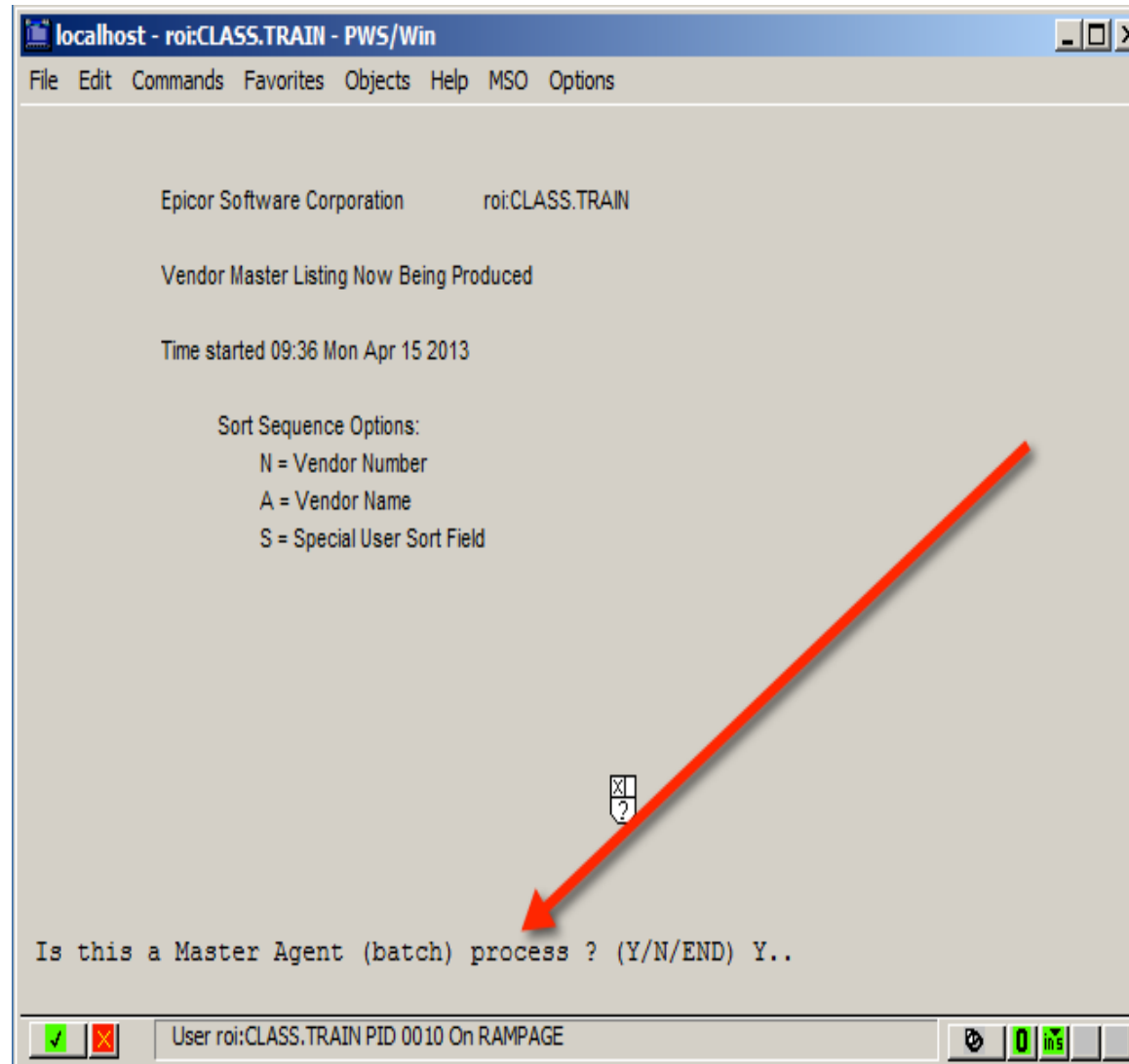
Entries 1

Change Which Field, END, TOP, \P

User roi:CLASS.TRAIN PID 0010 On RAMPAGE



USER EXPERIENCE ONCE ENABLED



NUGM 2024

THANK YOU

Marc Harbeson, NovoROI Systems

